

Ua tali
au fesili.

**FAAMATALAGA O
TAGATA MAMA'I E
FA'AAOGĀINA LE
TECENTRIQ[®] MO LE
HEPATOCELLULAR
CARCINOMA (HCC)**

O lenei puna'oa, e faia e le Roche Products (New Zealand) Ltd, e faamoemoe o se aitema faalea'oa'oga lagolagosua mo tagata mama'i ua faatonuina le fa'aaogāina o le TECENTRIQ e tuu faatasia ma le bevacizumab mo le togafitiga o le hepatocellular carcinoma (HCC).

FAATATAU I LENEI TAMA'ITUSI

O lenei tama'itusi e mo tagata na faatonuina le fa'aaogāina o le TECENTRIQ® (atezolizumab), e tuufaatasia ma le bevacizumab mo le togafitiga o le hepatocellular carcinoma (HCC).

O le tama'itusi na faia e fesoasoani iā te oe ma lou aiga ia malamalama atili e uiga i le HCC ma le tulaga o le TECENTRIQ i lou togafitiga.

O le a e maua tali i nisi o fesili masani e uiga i le TECENTRIQ, e aofia ai po o le ā le TECENTRIQ, faapefea ona aogā, ma faapefea ona tuuina atu.

O lenei tama'itusi o lo'o iai fo'i fa'amatalaga tāua mo le saogalemu ma le a'afiaga, fa'atasi ai ma se lisi o puna'oa aogā mo nisi fa'amatalaga ma lagolagosua.

Afai e iai ni au fesili a'o e faitau, tusi i lalo i le avanoa o lo'o tu'uina atu i le fa'ai'uga o le tama'itusi, e fa'amanatu ai oe e te fesili i se sui o lau vaega tausifua maloloina.

Fa'amolemole ia manatua e le'i faia le tama'itusi e sui ai fautuaga fa'apitoa fa'afoma'i mai lau foma'i po'o isi tagata tomai i le tausia o le soifua maloloina.

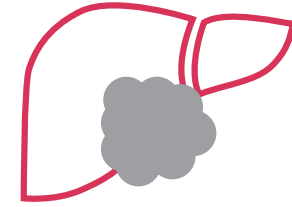
E mafai ona e maua nisi faamatalaga e uiga i le TECENTRIQ i le Consumer Medicine Information o loo maua i le www.medsafe.govt.nz

Afai o loo e mauaina le TECENTRIQ o se tui subcutaneous (SC) (tui i lalo o le pa'u) o le a e maua nisi faamatalaga i le sāvāli faaulutalaina 'Your Guide to TECENTRIQ SC' e maua i le www.cancertreatments.co.nz



FAAMATALAGA O SE MA'I

O le a nei?



Hepatocellular carcinoma HCC

O le Hepatocellular carcinoma (HCC) o le ituaiga kanesa o le ate pito sili ona taatele. E tupu pe a o'o ina fa'aletonu le hepatocytes, le ituaiga autu o sela i totonu o le ate, e tupu a'e aunoa ma se taofiofia ma avea ma kanesa.

Atonu e eseese togafitiga mo le HCC mo tagata ta'ito'atasi, ma e mafai ona fa'alagolago i le mamao o le alualu i luma ole fa'ama'i. Togafitiga e ono aofia ai le taotoga, tumour ablation (fa'aumatia le tuma i le vevela tele) po'o fuala'au/vaila'au.

Ua filifili lau foma'i e togafitia lau HCC i le **TECENTRIQ®** ma le **bevacizumab**. O le TECENTRIQ o se togafitiga lea e galulue faatasi ma le faiga o le malosi o le tino e puipuia ai o lou tino mai faama'i e tau ai sela o le kanesa. E ta'ua lenei mea o le **cancer immunotherapy**.

Bevacizumab o se togafitiga e fa'alavelaveina ai le sapalai o le toto i le tuma.

TOGAFITIGA

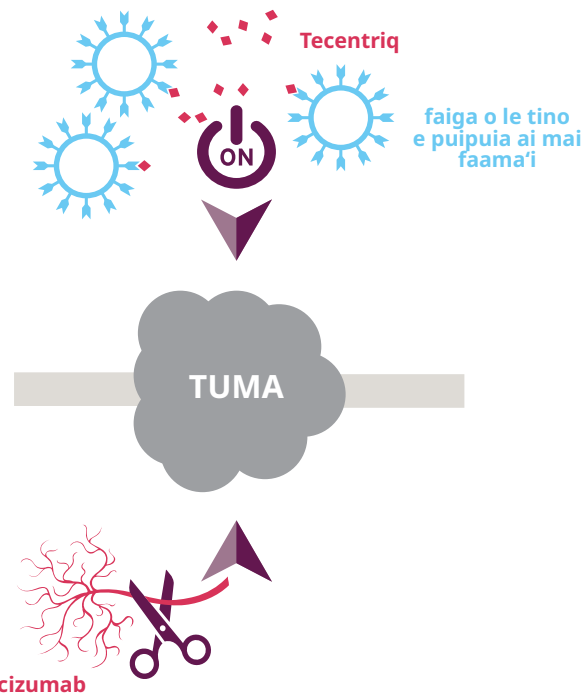


Ua faatonuina a'u e faia le togafitiga o le TECENTRIQ ma le bevacizumab. E faapefea ona la galulue?

O au togafitiga e tau ai le kanesa i ni auala eseese se lua:

TECENTRIQ® IMMUNOTHERAPY

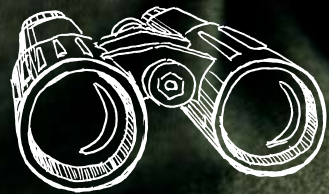
E faaola ai le faiga o lou tino e pui puia ai mai faama'i ina ia iloa, osofa'i ma faaumatia sela o le kanesa i le polokaina lea o le PD-L1. O le PD-L1 o se porotini e mafai ai ona lalafi sela o le kanesa mai le faiga o le tino e pui puia ai mai faama'i.



BEVACIZUMAB TOGAFITIGA O LE ANTI-ANGIOGENIC

Pui puia mai pe faatelegese le tuputupu a'e o le kanesa e ala i le taofiofia o le oo atu le toto i tuma. E fesoasoani fo'i i le fa'aola ai le vaega o pui puia o le tino.

AOTELEGA



O a mea e aofia i la'u togafitiga?



TOGAFITIGA O LE INTRAVENOUS (IV)

O le TECENTRIQ®, faatasi ma le bevacizumab, e tu'uina atu i se drip (IV faatulutulu) po'o se infusion (se ituaiga faapitoa o IV) e fa'ai atu i uaua (intravenous infusion) lea e fa'aofi e lau foma'i po'o le tausī soifua i totonu o se uaua. O le tele ole infusions (IV) ole a tu'uina atu e fua ile auala e te tali atu ai ile togafitiga. O le tuuina atu pea e le foma'i iā te oe le TECENTRIQ ma le bevacizumab seia oo ina e lē toe penefiti mai ai. Peita'i, e mafai ona taofi pe afai o le a avea a'afiaga ma fa'afitauli tele.



FAIGA O TOGAFITIGA

E tuuina atu togafitiga i le ta'i tolu vaiaso.*

O le a e maua le TECENTRIQ + bevacizumab mo le umi e te mauaina se penefiti ma onosa'ia togafitiga.

*Afai e lē onosa'ia le tuufaatasia o le TECENTRIQ + bevacizumab, atonu o le a suia lau togafitiga ina ia tuuina atu na'o le TECENTRIQ, ma o le a tuuina atu le ta'i 3 pe 4 vaiaso.



SIAKI MASANI

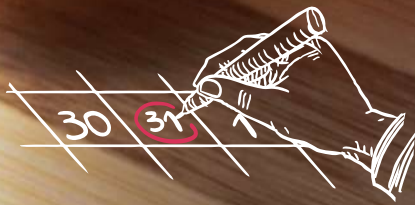
O le a faia au siaki masani ma lau foma'i, su'esu'ega o le toto ma ituaiga faata eseese e siaki ai pe ua tali le kanesa i togafitiga. O le a mata'ituina fo'i oe e lau foma'i mo a'afiaga e fesoasoani e iloa ma faatonutonu vave i latou.

FUAFUAINA

E mafai faapefea ona ou sauni mo le aso e fai ai le infusion (IV)?

MAKA ASO FAATULAGAINA AI LOU AVANOA I LAU KALENA.

Tusi i lalo au fesili mo lau foma'i poo le tausi soifua ma ia mautinoa le aumai i le taimi e vaai ai oe.



TAUNUU MAI UA MALOLO LELEI MA TAUMAFU

Se'i vagana ua fa'atonuina e lau foma'i po'o le tausi soifua i se isi mea, atonu e te mana'o e 'ai muamua i se taumafataga mama ne'i e maua i le faafaufau i le taimi o le togafitiga.

AUMAI VAI MA MEAAI MAMA

O le inuina o le suavai taumafa poo le vaisuamalie o le a maua ai pea oe e lava le vai i lou tino. E ono oso fo'i lou fiaai i le taimi o le togafitiga o lea la, aumai nisi o meaai mama e te fiafia ai.

OFU MAFANAFANA/PALANIKETE MA TOTINI MAFANAFANA

E faia lea ina ne'i e maalili.

FAAFIAFIAGA

- Tusi, nusipepa poo mekasini.
- Komepiuta Feavea'i/tablet ma le fagamaa ma meatuutaliga faalogologo.
- Paso ma taaloga.
- Lalaga, poo gaoioiga tutusa.

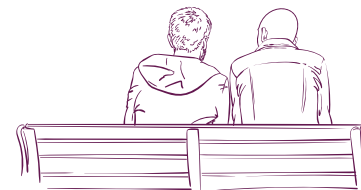


OFUINA OFU LELEI I LE FAALOGO

Se ofutino lima pupuu pe V le ua atonu e faigofie ai le faatinoga o le togafitiga.

E SILI ONA LELEI ONA AUA LE ALU TO'ATASI

Aemaise lava le infusion (IV) muamua. Ia mautinoa e fesili pe faatagaina ona aumai se u'o mo se lagolagosua.



FAATONU SE TAAVALE E ALU AI I LE FALE

Atonu e te iloa o vaila'au e te tulemoe ai pe fa'atupu ai fo'i isi a'afiaga e fa'afaigata ai le malaga na o oe.

Fuafua ina ia fetu'utu'una'i, au'a e mafai ona taofia oe i le po.

MALOLO PE A UMA LE INFUSION (IV)

Atonu e te lagona le vaivai pe le lele pe le 2-3 aso pe a uma le infusion (IV), ia fuafua mo sina malologa vave a'o e faia ni fuafuaga mo galuega, tamaiti, fagafao po'o isi tiute tauave.

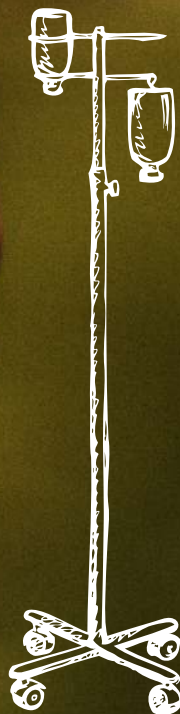
ASO E FAI AI LE INFUSION (IV)

*O a foliga o le aso masani
ona fai ai le infusion (IV)?*

O le a tuiina e le foma'i po o le tausi soifua le TECENTRIQ® ma le bevacizumab i totonu o lou uaua e ala i se fagaau vaivai (intravenous line).

CARD O FAAMATALAGA LAPATA'I MO TAGATA MA'I

O le a e maua se Patient Alert Card (Card o Faamatalaga Lapata'i mo Tagata Ma'i) i le taimi pe a'o le'i faia lau infusion (IV). Ia mautinoa e teu fa'atasi ma oe i taimi uma ma fa'aali atu i so'o se tagata tomai i le tausia o le soifua maloloina uma e ono togafitia oe.



1 FAATALANOAGA

ma lau foma'i poo le tausi soifua o le a mautinoa o loo fetau'i oe mo le togafitiga. Ia mautinoa le faia o so'o se fesili o ia te oe.

2 TOGAFITIGA



~2.5 itula

i le nofoa infusion (IV)

O lau infusion (IV) muamua o le a tele ai le taimi alu. O le a mata'ituina oe ma le toto'a mo so'o se a'afiaga e ono tupu i le taimi muamua o le infusion (IV).

Faatasi
i le
3 vaiaso



A'o e maua
pea le
penefiti mai
le togafitiga



TECENTRIQ

BEVACIZUMAB

3 MATAITUINA MO SE A'AFIAGA OSO

O le a siaki oe e lau tausi soifua mo ni fa'ailoga o se a'afiaga e mafai ona aofia ai:

- Mūmū i le pa'u, lagona le mageso poo pata i le pa'u
- Lagona le mū o le tino, mānava mapumapu, faigatā ona mānava pe tau lē mafai ona mānava
- Fulafula foliga, laugutu, laulaifaiva poo isi vaega o le tino
- Lagona le niniva
- Tigā le manava, tua poo le fatafata
- Faalogoina le lē lelei

Ta'u vave i lau tausi soifua pe afai e iai nisi o nei āuga i le taimi poo ina ua mae'a le aso e tasi talu na uma ona faia le infusion (IV).

Mo nisi faamatalaga, faamolemole faitau le TECENTRIQ Consumer Medicine Information o loo maua i le www.medsafe.govt.nz

A'AFIAGA

Faapefea o'u lagona i le taimi ou te iai i le fale?

O fualaa/vailaa uma e mafai ona iai a'afiaga. O nisi taimi latou te ogaoga, o le tele o taimi e leai. E te ono moomia togafitiga faafoma'i pe afai e te maua ni nai a'afiaga.

O le tele o a'afiaga e a'afia i le immunotherapy e la'itiiti i le feololo ma e mafai ona toe faaleleia pe a vave iloa ma va'avai lelei, e tãua ai la le ta'u atu ni āuga fou pe leaga i lau foma'i po'o le tausi soifua.

Faamolemole faitau le TECENTRIQ® Consumer Medicine Information o loo maua i le www.medsafe.govt.nz mo le lisi atoa o a'afiaga, e aofia ai nisi e ono mana'omia vave se faatalanoaga faafoma'i.

Fai i lau foma'i, tausi soifua poo le foma'i talavai e tali so'o sau fesili.

E fa'afefea ona ou tausia lelei a'u i taimi o togafitiga?

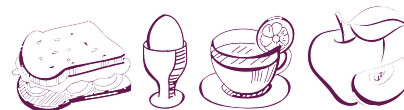
TALIA LE LAGOLAGOSUA

Fa'atuina se feso'ota'iga o tagata tausi - aiga ma uō e mafai ona e fa'alagolago iai mo le lagolagosua fa'aletino, lagona ma le mafaufau.



FAI SE API TUSITUSI SOIFUA MALOLOINA

Faamaumau au fesili mo lau foma'i po'o le tausi soifua ma fa'amatala ou āuga, pe a afai e iai.



TAUMAFI MEAAI PALENI, MALOLOINA

E mana'omia lou tino ia lava mea lelei e maua mai mea'ai e fesoasoani e tumau ai le soifua maloloina i taimi o togafitiga. Ona o a'afiaga e ono a'afia ai lou fia'ai, taumafai e 'ai le lima pe ono ni nai 'aiga maloloina la'iti i le aso atoa, nai lo 'aiga tetele e tolu.

Ia faapea fo'i, ona aua ne'i galo ia lava le vai e te inuina!

FAI NI NAI FAAMALOSITINO MA MAUA SE EA FELESI

E mafai ona fesoasoani faamalositino lemū e fa'aititia ai le popole ma le vaivai, fesoasoani e te moe lelei ai, ma fesoasoani fo'i e te lagona le fia 'ai. Peita'i e tãua le aua le soona uuna'ia oe lava.

Talanoa i lau foma'i e uiga po o le ā le tele o le faamalositino e lelei mo oe.



MALOLO

Atonu e te lagonaina le tele atu o le lēlavā i le taimi o togafitiga nai lo tulaga masani. Taumafai ia tele se moe i le po e te lagona ai e lava ai lou malosia i le taimi o le ao. I le gasologa o le aso, taumafai e tumau i le faia o gaioiga faaletino e mafai ona e fai, ae fai sina malologa pupuu pe a e lagona le vaivai tele.



FAAMATALAGA TAU SAOGALEMU

O le ē le taimi e tatau ona ou vili ai la'u foma'i poo tausi soifua?

VILI I LE TAIMI LAVA LENA

pe afai ua faateleina le leaga o ou a'afiaga, po ua oso ni a'afiaga fou.

AUA e te taumafai e togafitia ou lava āuga!

Afai o loo e mauaina le **TECENTRIQ** o se tui subcutaneous (SC) (tui i lalo o le pa'u) o le a e maua nisi faamatalaga i le sāvali faaulutalaina 'Your Guide to TECENTRIQ SC' e maua i le www.cancertreatments.co.nz

A'AFIAGA E ONO MAUA

E te ono maua se tasi poo nisi o a'afiaga o loo lisi atu i lalo. O a'afiaga pito taatele o loo i le lanu malosi.

Ia mataala i taimi uma mo so'o se āuga fou, aemaise i le 2-3 aso muamua pe a uma togafitiga. Ia mautinoa e maua faatonuga mai lau foma'i po'o le tausi soifua e uiga i āuga ma'oti e tatau ona e va'ava'ai i ai ma lipoti vave atu i le vaega o fesoota'iga fa'afuase'i e saunia e le falema'i. O le faia vave o togafitiga faafoma'i e mafai ona fesoasoani e taofia nei fa'afitauli mai le fa'ateleina ona ogaoga.

MATA

- Ua suia la'u vaai
- Ua ta'i lua mea i la'u vaai
- Ua sili atu ona maaleale o'u mata i le malamalama
- Ua tele ina lanusamasama mea papa'e o o'u mata
- Ua mu o'u mata, tiga pe matua tiga lava
- Ua mamafa o'u laumata

ULU, FOLIGA MA GUTU

- Ua tele atu lo'u fiainu nai lo le tulaga masani
- Ua mago lo'u gutu
- Ou te lagona le tau matapogia, niniva ma/pe ulu tau palasi
- E iai o'u ulu tigā ua lē alu ese pe e lē masani ai fo'i mo a'u
- Ua tele ona malō lo'u ua nai lo le tulaga masani
- Ua pē maso o o'u foliga
- Ua faigatā ona folo se mea

MANAVA MA TAUFALE

- Ou te lagona le faiai la'itiiti pe tele nai lo le tulaga masani
- Sa ou faaufau ma faasuati
- E mamau lo'u manava
- E tatafi lo'u manava
- E uliuli, pa'auli lanu, piipii o'u feau mamao pe totolia pe aloua
- E tigā lo'u manava
- E iai faafitauli i o'u taufale

TULAGA MASANI

- Ou te fiva
- Ua oso le papala i lo'u gutu, isu, fā'a'i, poo vaega o itutinosā
- Ua ou lagona le lēlavā poo le lē maotonu
- Ua ou lagona le malulu nai lo tulaga masani
- Ua lusi pe ua faaopoopo lo'u mamafa
- Ua ou matau pe matau fo'i e isi se suiga i la'u amio
- Ua tele ona ou lagoaina le lē lelei
- Ua tele ina faigatā faiga o faamalositino nai lo tulaga masani

PA'U MA LAUULU

- E iai le mūmū i le tino pe lagona e lo'u pa'u le mageso
- Ua faasolo ina lanusamasama lo'u pa'u
- Ua lusi nisi lanu o lo'u pa'u
- Ua tele atu ona ou piliki pe totolia nai lo le mea masani ai
- Ua tele ina ou afugia nai lo tulaga masani
- Ua toulu lo'u lauulu
- O loo fulafula le pa'u o lo'u tino, mu, puta le pa'u o le tino, pe mafolē
- Ua tele in ou ma'ale'ale i le vevela ma le malulu nai lo tulaga ou te masani ai
- Ua mūmū lo'u pa'u
- Ua piipii pe susū lo'u pa'u

FĀ'A'I, FATAFATA MA FATU

- Ua fulafula lymph nodes (fatupuipui i le tino lea e fesoasoani e tete'e ai i siama)
- Ua amata se tale fou pe leaga atu
- Ua faaiaigatā ona ou mānava
- Ua faasolo ina pāu lo'u leo
- Ua ou lagona ua tele atu le tau lē mafai ona mānava
- E tigā lo'u fatafata
- Ua ou matau ua matuā tātā vale, tātā vave pe tātā lē masani ai lo'u fatu
- Ua lagona le faigatā pe tigā ona manava

TAGAMIMI MA FEUVAI

- Ua suia le tele ma le lanu o a'u feuvai
- Ua lanu malosi a'u feuvai
- Ua iai faafitauli i lo'u tagamimi

MASO, NEULA (NERVES), SO'OGA MA VAE

- E tigā o'u maso
- E lagona le pē, matuitui pe mainiini i o'u lima ma vae
- E iai maso vaivai i o'u vae ma ogālima
- O loo fulafula o'u lima, vae po o le manava
- E iai o'u faafitauli i le fealua'i ai
- Ua tiga so'oga o o'u ivi, malo, fulafula ma/pe mafanafana

Talu ai o le tele o nei a'afiaga e mafai fo'i ona tupu mai i isi mafua'aga e mana'omia ai togafitiga 'ese'ese, ia mautinoa e iloa uma e au tausi soifua ma foma'i - e aofia ai ma lou foma'i masani - o oe o lo'o i ai i le immunotherapy. **E faaali taimi uma lau Card o Faamatalaga Lapata'i mo Tagata Ma'i.**

O fea ou te maua ai nisi faamatalaga ma lagolagosua?

FAAMATALAGA E UIGA I LE TECENTRIQ®

www.cancertreatments.co.nz

www.medsafe.govt.nz

FAAMATALAGA E UIGA I LE KANESA O LE ATE

www.healthnavigator.org.nz

LAGOLAGOSUA MO LE TAGATA MA'I

www.cancernz.org.nz

ISI LINKS

<https://www.gutcancer.org.nz/liver-cancer/>

FESOOTA'IGA TĀUA

E fa'ailoa e lau foma'i po'o le tausī soifua numera e sili ona tāua e te vala'au iai.

Doctor (Foma'i)

Nurse (Tausī soifua)

Oncology ward (Falema'i o kanesa)

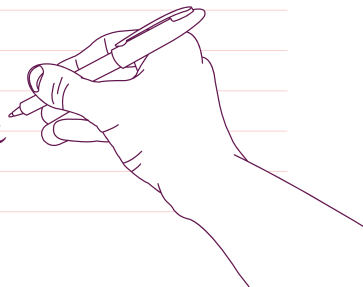
Acute oncology service (Auannaga i ma'i kanesa)

After-hours contact number (Numera feso'ota'i fafo atu o itula faigaluega)

Accident & Emergency number (Numera o Faalavelave ma Faafuase'i)

Patient support line (Laina lagolagosua i le tagata ma'i)

Tusitusiga





For any questions about this booklet or Tecentriq (atezolimab), contact Roche Medical Information on **0800 276 243** or via email at **auckland.medinfonz@roche.com**.

Tecentriq® (atezolizumab) 1200mg/20mL and 840mg/14mL and **Tecentriq SC** (atezolizumab 1875 mg/15 mL solution for subcutaneous injection) are **Prescription Medicines** used for early (has not spread to other parts of the body) and advanced or metastatic (has spread to other parts of the body) non-small cell lung cancer (NSCLC), extensive stage small-cell lung cancer, advanced or metastatic urothelial (bladder and urinary system) cancer, advanced or metastatic triple negative breast cancer and unresectable hepatocellular carcinoma (HCC).

Ask your doctor if Tecentriq is right for you.

Tecentriq is a funded medicine for unresectable HCC; and locally advanced or metastatic NSCLC after prior chemotherapy; for patients who meet defined criteria. A prescription charge and doctor's fees apply.

Tecentriq is an unfunded medicine for urothelial cancer, breast cancer and other lung cancer indications. Tecentriq SC is not funded for any indication. Ask your health professional about the cost of the medicine and other fees that may apply.

Use only as directed. If symptoms continue or you have side effects, see your healthcare professional. For more information about Tecentriq:

- talk to your health professional; or
- visit medsafe.govt.nz for Tecentriq Consumer Medicine Information; or
- visit cancertreatments.co.nz or call Roche on 0800 276 243.

Tecentriq has risks and benefits.

Possible common side effects include: loss of appetite; diarrhoea; shortness of breath; fatigue; red, itchy scaly skin; dry, cracked skin; local reaction at the injection site (subcutaneous formulation); nausea; fever, chills; headache; vomiting; difficulty swallowing; flu-like symptoms; nasal congestion; stomach, back, muscle, bone, joint or throat pain; urinary tract infection; lung infection; cough; common cold; dizziness, light-headedness or fainting; bleeding or bruising; looking pale; constipation; sore mouth and/or throat, mouth ulcers and cold sores; numbness or weakness of the arms and legs; hoarse or rough voice; high blood pressure; hair loss; a change in the way things taste; swelling to arms and legs; arthritis.

Do not use Tecentriq if: you have an allergy to atezolizumab or any of the other ingredients.

Tell your doctor if: you have immune system problems such as Crohn's disease, ulcerative colitis, or lupus; you have inflammation of the lungs (pneumonitis); you have liver problems, such as hepatitis; you have thyroid problems; you have experienced a severe skin reaction after taking other anticancer medicines; you are taking other medicines; you have allergies to any other medicines, foods, preservatives or dyes; you are pregnant or breastfeeding or plan to become pregnant or breastfeed. Tell your doctor right away if you become pregnant during treatment with Tecentriq.

Tell your doctor immediately or go to your nearest Accident and Emergency Centre if you notice any of the following: inflammation of the lungs (new or worsening cough, shortness of breath, and chest pain); inflammation of the liver (yellowing of skin or eyes, nausea, vomiting, bleeding or bruising, dark urine, and stomach pain); inflammation of the intestines (diarrhoea, blood in stools, and stomach pain); inflammation of the thyroid, pituitary and adrenal glands (tiredness, weight loss, weight gain, changes in mood or behaviour, visual disturbances, increased sensitivity to cold or heat, slow or rapid heart rate, hair loss, constipation, headache, and dizziness); type 1 diabetes mellitus (feeling more hungry or thirsty than usual, need to urinate more often, weight loss, and feeling tired); inflammation of the brain or spinal cord (neck stiffness, headache, fever, chills, vomiting, eye sensitivity to light, confusion and sleepiness); inflammation or problems of the nerves (muscle weakness, numbness or tingling in hands and feet); inflammation of the heart muscle (shortness of breath, feeling tired, irregular heart beat or chest pain); inflammation of muscles (muscle pain or stiffness, skin rash); concurrent (at the same time) inflammation of the heart muscle, muscles and/or problems with the nerves (drooping eyelids, vision or swallowing difficulties, symptoms for the individual conditions: muscle pain or stiffness, weakness or tingling in hands or feet, shortness of breath, feeling tired, irregular heart beat and/or chest pain, skin rash); inflammation of the sac surrounding the heart (chest pain, difficulty and/or painful breathing, pounding/racing heart beat, fainting and/or light-headedness, swelling of legs or abdomen, pale and/or clammy skin); inflammation of the pancreas (abdominal pain, nausea and vomiting); inflammation of the kidneys (dark and/or frothy urine, high blood pressure, swelling to face, feet, legs and hands); severe infusion reactions including anaphylaxis (fever, chills, shortness of breath, wheezing or difficulty breathing, swelling of the face/lips/tongue, rash/itchy skin and hot flushes); severe skin reactions (rash, swelling of the skin, burning pain of the skin, ulcers and lesions in the mouth, lips, genital or anal regions, flat red-purple spots on the skin, skin blisters, peeling skin); excessive activation of the immune system (fever, swollen lymph nodes, skin rash, yellowing of skin and eyes, coughing, difficulty breathing, vomiting, diarrhoea, headache, changes in vision, weakness); paralysis of the facial muscles; inflammation of the spinal cord (muscle weakness in the legs and arms, numbness, problems with mobility, the bladder and bowel); inflammation of the eye (eye pain, redness, light sensitivity, changes to vision); swollen lymph nodes, rash or tender lumps on skin, cough, shortness of breath/chest tightness, abnormal heart rate or eye pain.